

UN/EDIFACT

UNITED NATIONS STANDARD MESSAGE (UNSM)

CUSDEC
CUSTOMS DECLARATION MESSAGE

Útflutningstollskýrsla

Síðast breytt 1. apríl 2014:

Bls. 19. Kóda 4 bætt við gagnalið 1225. 4 = Breyting á áður innsendri tollskýrslu. Notað við fullnaðaruppgjör bráðabirgðatollafgreiðslu

CUSDEC:

Útgefið af: ICEPRO, nefnd um bætt verklag í viðskiptum
Ríkistollstjóraembættið
Útgáfunúmer: 1.0
Dags: desember 1997

EDIFACT-útgáfa:

Skeyti: CUSDEC
Útgáfa: D96A
Staða: 2
Endurskoðun: 3
Dags. útgáfu: 95-11
Útgáfuaðili: UN (Sameinuðu þjóðirnar)

Efni:

| | |
|----------------------------------|----|
| EFNI: | 3 |
| INNGANGUR EDIFACT | 4 |
| UPPBYGGING CUSDEC..... | 6 |
| LÍÐIR CUSDEC Í STAFRÓFSRÖÐ | 11 |
| ÞVOTTASNÚRA..... | 12 |
| LÝSING LIÐA | 17 |
| DÆMI..... | 51 |

Inngangur EDIFACT

Þessi texti er inngangur að skilgreiningu SP á CUSDEC-skeytinu. Hann er birtur hér óbreyttur.

For general information on UN standard message types see UN Trade Data Interchange Directory, UNTDID, Part 4, Section 2.6, UN/ECE UNSM General Introduction

0. INTRODUCTION

This specification provides the definition of the Customs declaration message (CUSDEC) to be used in Electronic Data Interchange (EDI) between trading partners involved in administration, commerce and transport.

1. SCOPE

1.1 Functional Definition

This Customs Declaration Message (CUSDEC) permits the transfer of data from a declarant to a customs administration for the purpose of meeting legislative and/or operational requirements in respect of the declaration of goods for import, export or transit. The message may also be used, for example :

- to transmit data from an exporter in one country to an importer in another country;
- to transmit consignment data from one customs administration to another;
- to transmit data from a customs authority to other governments agencies and/or interested administrations.
- to transmit data from a declarant to the appropriate data collection agency on the movement of goods between statistical territories.

1.2 Field of Application

This message may be applied for both national and international trade. It is based on universal practice and is not dependent on the type of business or industry.

1.3 Principles

This message incorporates the necessary transport, statistical and customs information. Provision has also been made for the inclusion of appropriate commercial information which may be accepted by customs in lieu of supporting documentation.

The design principles adopted allow for referencing one or more commercial documents pertaining to the same declaration and for the grouping of document lines into a single customs item. A customs item consists of the grouping of those document lines having the same customs characteristics (e.g. tariff number, declared use, etc). The message correspondingly permits the use of single or multi-packaging concepts and their identification to a customs item.

2. REFERENCES

See UNTDID, Part 4, Chapter 2.6 UN/ECE UNSM - General Introduction, Section 1.

3. TERMS AND DEFINITIONS

See UNTDID, Part 4, Chapter 2.6 UN/ECE UNSM - General Introduction, Section 2.

Uppbygging CUSDEC

Hér er sýnd uppbygging CUSDEC-skeytisins í heild.
Þeir liðir sem ekki eru notaðir, eru skyggðir í þessu yfirliti.

| TAG | NAME | S | REPT | | |
|----------------------------------|-----------------------------------|---|------|-------|-------|
| UNH | MESSAGE HEADER | M | 1 | | |
| BGM | BEGINNING OF MESSAGE | M | 1 | | |
| CST | CUSTOMS STATUS OF GOODS | C | 1 | | |
| LOC | PLACE/LOCATION IDENTIFICATION | C | 99 | | |
| DTM | DATE/TIME/PERIOD | C | 15 | | |
| GIS | GENERAL INDICATOR | C | 25 | | |
| FII | FINANCIAL INSTITUTION INFORMATION | C | 1 | | |
| MEA | MEASUREMENTS | C | 5 | | |
| EQD | EQUIPMENT DETAILS | C | 999 | | |
| SEL | SEAL NUMBER | C | 999 | | |
| Group 1 - References | | | | C 99 | |
| RFF | REFERENCE | M | 1 | ┌───┐ | |
| DTM | DATE/TIME/PERIOD | C | 1 | | |
| Group 2 - Package loop | | | | C 10 | |
| PAC | PACKAGE | M | 1 | ┌───┐ | |
| Group 3 - Package identification | | | | | C 999 |
| PCI | PACKAGE IDENTIFICATION | M | 1 | | |
| FTX | FREE TEXT | C | 1 | | |
| Group 4 - Details of transport | | | | C 5 | |
| TDT | DETAILS OF TRANSPORT | M | 1 | ┌───┐ | |
| TPL | TRANSPORT PLACEMENT | C | 1 | | |
| Group 5 - Document loop | | | | C 10 | |
| DOC | DOCUMENT/MESSAGE DETAILS | M | 1 | ┌───┐ | |
| DTM | DATE/TIME/PERIOD | C | 2 | | |
| LOC | PLACE/LOCATION IDENTIFICATION | C | 1 | | |
| Group 6 - Name and address loop | | | | C 10 | |
| NAD | NAME AND ADDRESS | M | 1 | ┌───┐ | |
| RFF | REFERENCE | C | 10 | | |
| CTA | CONTACT INFORMATION | C | 1 | | |
| COM | COMMUNICATION CONTACT | C | 5 | | |
| Group 7 - Terms of delivery loop | | | | C 1 | |
| TOD | TERMS OF DELIVERY | M | 1 | ┌───┐ | |
| LOC | PLACE/LOCATION IDENTIFICATION | C | 2 | | |
| FTX | FREE TEXT | C | 1 | | |
| Group 8 - Monetary loop | | | | C 25 | |
| MOA | MONETARY AMOUNT | M | 1 | ┌───┐ | |
| Group 9 - Currencies loop | | | | | C 1 |
| CUX | CURRENCIES | M | 1 | | |
| DTM | DATE/TIME/PERIOD | C | 1 | | |
| DETAIL SECTION ----- | | | | | |
| UNS | SECTION CONTROL | M | 1 | | |

| | | | | | | |
|-----------------------------------|--------------------------------|---|------|---|------|--|
| Group 10 - Documents loop | | | | C | 999 | |
| DMS | DOCUMENT/MESSAGE SUMMARY | M | 1 | | | |
| DTM | DATE/TIME/PERIOD | C | 1 | | | |
| MEA | MEASUREMENTS | C | 5 | | | |
| Group 11 - Monetary loop | | | | C | 25 | |
| MOA | MONETARY AMOUNT | M | 1 | | | |
| Group 12 - Currencies loop | | | | C | 1 | |
| CUX | CURRENCIES | M | 1 | | | |
| DTM | DATE/TIME/PERIOD | C | 1 | | | |
| Group 13 - Terms of delivery loop | | | | C | 1 | |
| TOD | TERMS OF DELIVERY | M | 1 | | | |
| LOC | PLACE/LOCATION IDENTIFICATION | C | 2 | | | |
| FTX | FREE TEXT | C | 1 | | | |
| Group 14 - Name and address loop | | | | C | 10 | |
| NAD | NAME AND ADDRESS | M | 1 | | | |
| Group 15 - Documents loop | | | | C | 10 | |
| DOC | DOCUMENT/MESSAGE DETAILS | M | 1 | | | |
| DTM | DATE/TIME/PERIOD | C | 2 | | | |
| LOC | PLACE/LOCATION IDENTIFICATION | C | 1 | | | |
| Group 16 - Package loop | | | | C | 10 | |
| PAC | PACKAGE | M | 1 | | | |
| Group 17 - Package id. loop | | | | C | 999 | |
| PCI | PACKAGE IDENTIFICATION | M | 1 | | | |
| FTX | FREE TEXT | C | 1 | | | |
| RFF | REFERENCE | C | 1 | | | |
| Group 18 - Payment terms loop | | | | C | 5 | |
| PAT | PAYMENT TERMS BASIS | M | 1 | | | |
| MOA | MONETARY AMOUNT | C | 1 | | | |
| PCD | PERCENTAGE DETAILS | C | 1 | | | |
| FTX | FREE TEXT | C | 1 | | | |
| Group 19 - Allowance/charge loop | | | | C | 10 | |
| ALC | ALLOWANCE OR CHARGE | M | 1 | | | |
| RTE | RATE DETAILS | C | 1 | | | |
| MOA | MONETARY AMOUNT | C | 1 | | | |
| PCD | PERCENTAGE DETAILS | C | 1 | | | |
| QTY | QUANTITY | C | 1 | | | |
| Group 20 - Currencies loop | | | | C | 1 | |
| CUX | CURRENCIES | M | 1 | | | |
| DTM | DATE/TIME/PERIOD | C | 1 | | | |
| Group 21 - Line item loop | | | | C | 9999 | |
| LIN | LINE ITEM | M | 1 | | | |
| PIA | ADDITIONAL PRODUCT ID. | C | 1 | | | |
| QTY | QUANTITY | C | 1 | | | |
| PRI | PRICE DETAILS | C | 2 | | | |
| PCD | PERCENTAGE DETAILS | C | 1 | | | |
| MEA | MEASUREMENTS | C | 5 | | | |
| QVR | QUANTITY VARIANCES | C | 5 | | | |
| MOA | MONETARY AMOUNT | C | 15 | | | |
| NAD | NAME AND ADDRESS | C | 10 | | | |
| GIR | RELATED IDENTIFICATION NUMBERS | C | 9999 | | | |

| | | | | | | |
|-----------------------------------|-------------------------------|---|----|---|------|--|
| Group 22 - Documents loop | | | | C | 10 | |
| DOC | DOCUMENT/MESSAGE DETAILS | M | 1 | | | |
| DTM | DATE/TIME/PERIOD | C | 2 | | | |
| Group 23 - Allowance/charge loop | | | | C | 10 | |
| ALC | ALLOWANCE OR CHARGE | M | 1 | | | |
| RTE | RATE DETAILS | C | 1 | | | |
| MOA | MONETARY AMOUNT | C | 1 | | | |
| PCD | PERCENTAGE DETAILS | C | 1 | | | |
| QTY | QUANTITY | C | 1 | | | |
| Group 24 - Currencies loop | | | | C | 1 | |
| CUX | CURRENCIES | M | 1 | | | |
| DTM | DATE/TIME/PERIOD | C | 1 | | | |
| Group 25 - Terms of delivery loop | | | | C | 1 | |
| TOD | TERMS OF DELIVERY | M | 1 | | | |
| LOC | PLACE/LOCATION IDENTIFICATION | C | 2 | | | |
| Group 26 - Payment terms loop | | | | C | 5 | |
| PAT | PAYMENT TERMS BASIS | M | 1 | | | |
| MOA | MONETARY AMOUNT | C | 1 | | | |
| PCD | PERCENTAGE DETAILS | C | 1 | | | |
| FTX | FREE TEXT | C | 1 | | | |
| Group 27 - Item description loop | | | | C | 5 | |
| IMD | ITEM DESCRIPTION | M | 1 | | | |
| FTX | FREE TEXT | C | 1 | | | |
| Group 28 - Package loop | | | | C | 10 | |
| PAC | PACKAGE | M | 1 | | | |
| Group 29 - Package id. loop | | | | C | 999 | |
| PCI | PACKAGE IDENTIFICATION | M | 1 | | | |
| FTX | FREE TEXT | C | 1 | | | |
| REF | REFERENCE | C | 1 | | | |
| Group 30 - Customs status loop | | | | C | 9999 | |
| CST | CUSTOMS STATUS OF GOODS | M | 1 | | | |
| FTX | FREE TEXT | C | 9 | | | |
| LOC | PLACE/LOCATION IDENTIFICATION | C | 25 | | | |
| DTM | DATE/TIME/PERIOD | C | 5 | | | |
| MEA | MEASUREMENTS | C | 20 | | | |
| NAD | NAME AND ADDRESS | C | 5 | | | |
| TDT | DETAILS OF TRANSPORT | C | 9 | | | |
| Group 31 - Package loop | | | | C | 10 | |
| PAC | PACKAGE | M | 1 | | | |
| Group 32 - Package id. loop | | | | C | 999 | |
| PCI | PACKAGE IDENTIFICATION | M | 1 | | | |
| FTX | FREE TEXT | C | 1 | | | |
| Group 33 - Monetary loop | | | | C | 25 | |
| MOA | MONETARY AMOUNT | M | 1 | | | |
| Group 34 - Currencies loop | | | | C | 1 | |
| CUX | CURRENCIES | M | 1 | | | |
| DTM | DATE/TIME/PERIOD | C | 1 | | | |
| Group 35 - Reference loop | | | | C | 999 | |

| | | | | | | |
|-----|-------------------------------------|---|----|---|----|--|
| RFF | REFERENCE | M | 1 | | | |
| DTM | DATE/TIME/PERIOD | C | 1 | | | |
| GIN | GOODS IDENTITY NUMBER | C | 99 | | | |
| MOA | MONETARY AMOUNT | C | 1 | | | |
| | Group 36 - Item description loop | | | C | 1 | |
| IMD | ITEM DESCRIPTION | M | 1 | | | |
| FTX | FREE TEXT | C | 5 | | | |
| | Group 37 - Documents loop | | | C | 25 | |
| DOC | DOCUMENT/MESSAGE DETAILS | M | 1 | | | |
| DTM | DATE/TIME/PERIOD | C | 2 | | | |
| LOC | PLACE/LOCATION IDENTIFICATION | C | 1 | | | |
| NAD | NAME AND ADDRESS | C | 5 | | | |
| | Group 38 - Terms of delivery loop | | | C | 1 | |
| TOD | TERMS OF DELIVERY | M | 1 | | | |
| LOC | PLACE/LOCATION IDENTIFICATION | C | 2 | | | |
| FTX | FREE TEXT | C | 1 | | | |
| | Group 39 - Nature of cargo loop | | | C | 1 | |
| GDS | NATURE OF CARGO | M | 1 | | | |
| FTX | FREE TEXT | C | 1 | | | |
| | Group 40 - General indicator loop | | | C | 25 | |
| GIS | GENERAL INDICATOR | M | 1 | | | |
| PCD | PERCENTAGE DETAILS | C | 1 | | | |
| DTM | DATE/TIME/PERIOD | C | 1 | | | |
| RFF | REFERENCE | C | 1 | | | |
| | Group 41 - Duty/tax/fee loop | | | C | 10 | |
| TAX | DUTY/TAX/FEE DETAILS | M | 1 | | | |
| MOA | MONETARY AMOUNT | C | 2 | | | |
| GIS | GENERAL INDICATOR | C | 1 | | | |
| | Group 42 - Quantity variances loop | | | C | 1 | |
| QVR | QUANTITY VARIANCES | M | 1 | | | |
| QTY | QUANTITY | C | 1 | | | |
| | Group 43 - References loop | | | C | 1 | |
| RFF | REFERENCE | M | 1 | | | |
| DTM | DATE/TIME/PERIOD | C | 1 | | | |
| | Group 44 - Related id. numbers loop | | | C | 50 | |
| GIR | RELATED IDENTIFICATION NUMBERS | M | 1 | | | |
| GIS | GENERAL INDICATOR | C | 10 | | | |
| NAD | NAME AND ADDRESS | C | 1 | | | |
| MEA | MEASUREMENTS | C | 5 | | | |
| | Group 45 - Monetary loop | | | C | 10 | |
| MOA | MONETARY AMOUNT | M | 1 | | | |
| | Group 46 - Currencies loop | | | C | 1 | |
| CUX | CURRENCIES | M | 1 | | | |
| DTM | DATE/TIME/PERIOD | C | 1 | | | |
| | Group 47 - Duty/tax/fee loop | | | C | 10 | |
| TAX | DUTY/TAX/FEE DETAILS | M | 1 | | | |
| MOA | MONETARY AMOUNT | C | 2 | | | |
| GIS | GENERAL INDICATOR | C | 1 | | | |
| | Group 48 - Documents loop | | | C | 5 | |
| DOC | DOCUMENT/MESSAGE DETAILS | M | 1 | | | |

| | | | | |
|-----|-------------------------------|---|---|--|
| DTM | DATE/TIME/PERIOD | C | 2 | |
| LOC | PLACE/LOCATION IDENTIFICATION | C | 1 | |

SUMMARY SECTION -----

| | | | | |
|-----|-----------------|---|---|--|
| UNS | SECTION CONTROL | M | 1 | |
| CNT | CONTROL TOTAL | C | 5 | |

| | | | | | | |
|-----|------------------------------|---|---|---|----|--|
| | Group 49 - Duty/tax/fee loop | | | C | 50 | |
| TAX | DUTY/TAX/FEE DETAILS | M | 1 | | | |
| MOA | MONETARY AMOUNT | C | 2 | | | |
| GIS | GENERAL INDICATOR | C | 1 | | | |

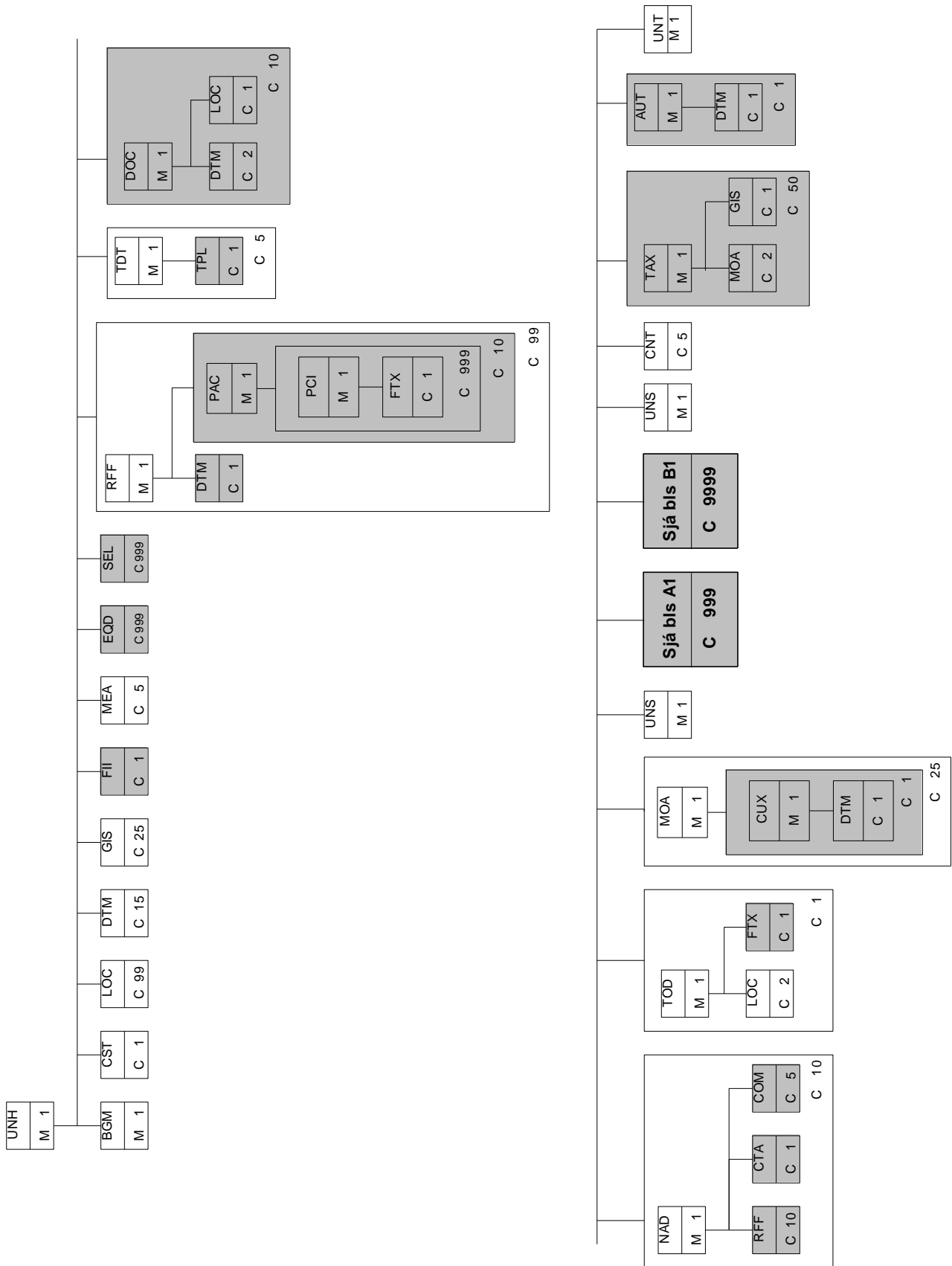
| | | | | | | |
|-----|---------------------------|---|---|---|---|--|
| | Group 50 - Authentication | | | C | 1 | |
| AUT | AUTHENTICATION | M | 1 | | | |
| DTM | DATE/TIME/PERIOD | C | 1 | | | |

| | | | | |
|-----|-----------------|---|---|--|
| UNT | MESSAGE TRAILER | M | 1 | |
|-----|-----------------|---|---|--|

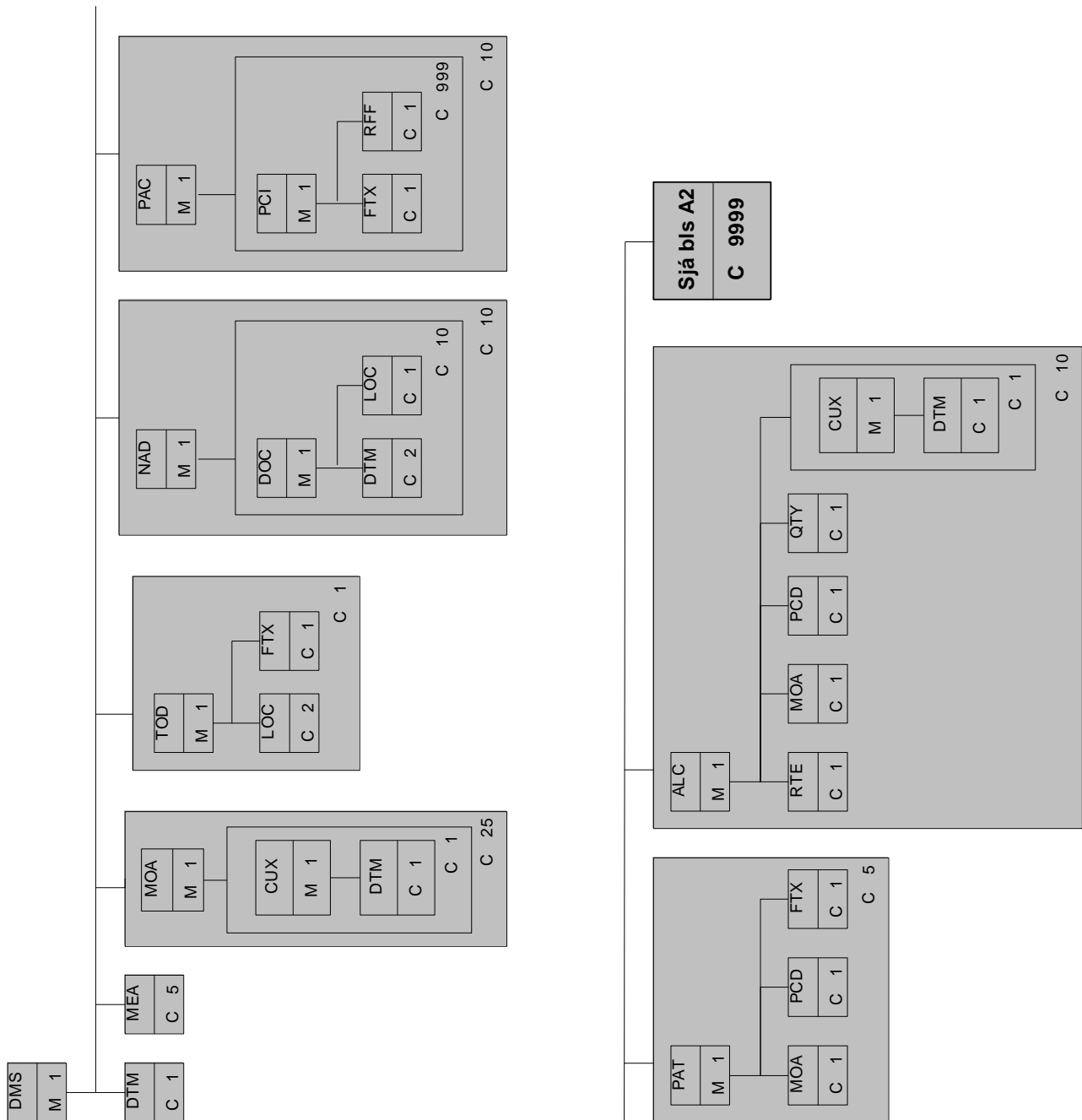
Liðir CUSDEC í stafrófsröð

ALC ALLOWANCE OR CHARGE
AUT AUTHENTICATION
BGM BEGINNING OF MESSAGE
CNT CONTROL TOTAL
COM COMMUNICATION CONTACT
CST CUSTOMS STATUS OF GOODS
CTA CONTACT INFORMATION
CUX CURRENCIES
DMS DOCUMENT/MESSAGE SUMMARY
DOC DOCUMENT/MESSAGE DETAILS
DTM DATE/TIME/PERIOD
EQD EQUIPMENT DETAILS
FII FINANCIAL INSTITUTION INFORMATION
FTX FREE TEXT
GDS NATURE OF CARGO
GIN GOODS IDENTITY NUMBER
GIR RELATED IDENTIFICATION NUMBERS
GIS GENERAL INDICATOR
IMD ITEM DESCRIPTION
LIN LINE ITEM
LOC PLACE/LOCATION IDENTIFICATION
MEA MEASUREMENTS
MOA MONETARY AMOUNT
NAD NAME AND ADDRESS
PAC PACKAGE
PAT PAYMENT TERMS BASIS
PCD PERCENTAGE DETAILS
PCI PACKAGE IDENTIFICATION
PIA ADDITIONAL PRODUCT ID.
PRI PRICE DETAILS
QTY QUANTITY
QVR QUANTITY VARIANCES
RFF REFERENCE
RTE RATE DETAILS
SEL SEAL NUMBER
TAX DUTY/TAX/FEE DETAILS
TDT DETAILS OF TRANSPORT
TOD TERMS OF DELIVERY
TPL TRANSPORT PLACEMENT
UNH MESSAGE HEADER
UNS SECTION CONTROL
UNT MESSAGE TRAILER

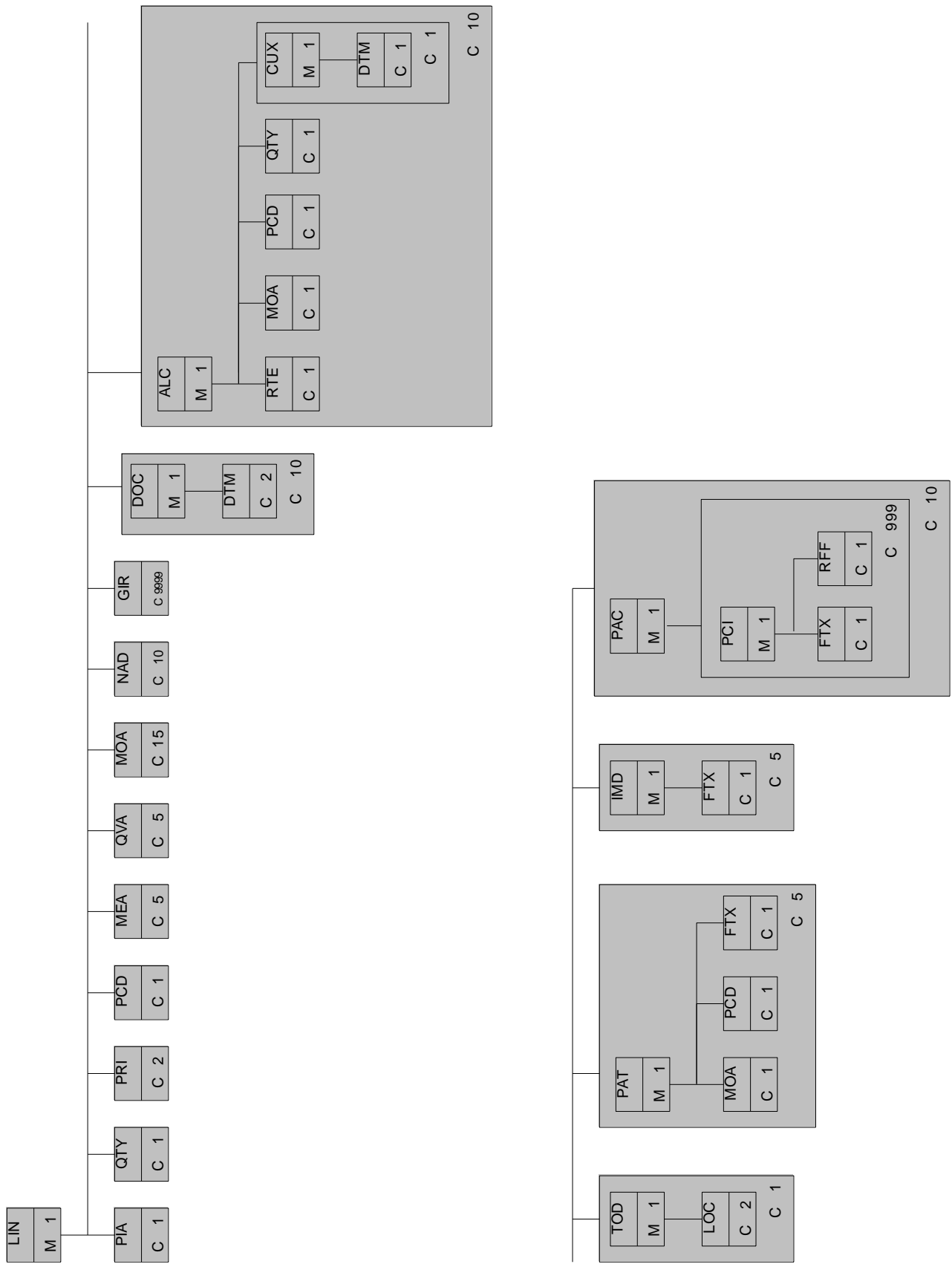
Þvottasnúra



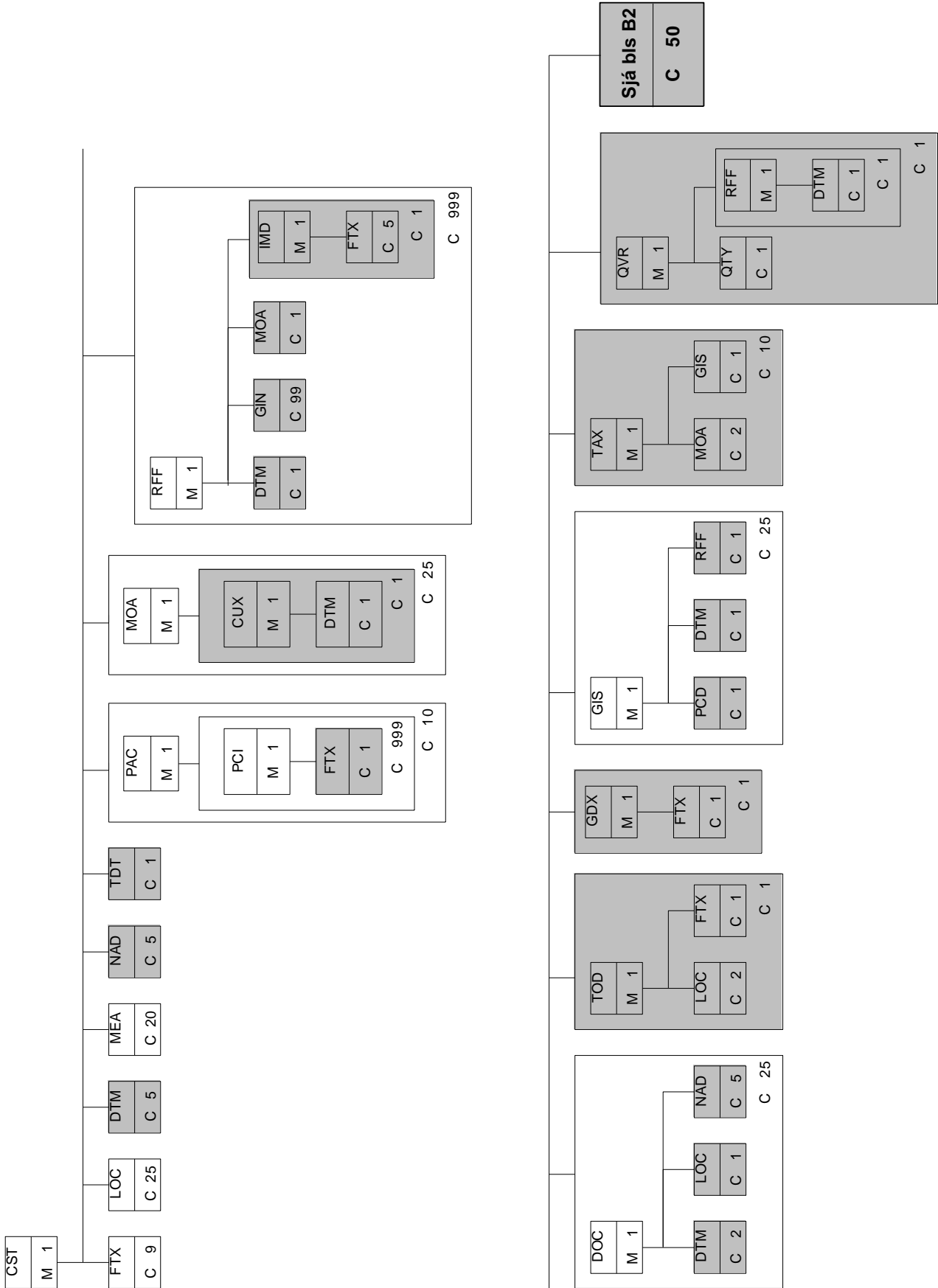
A1



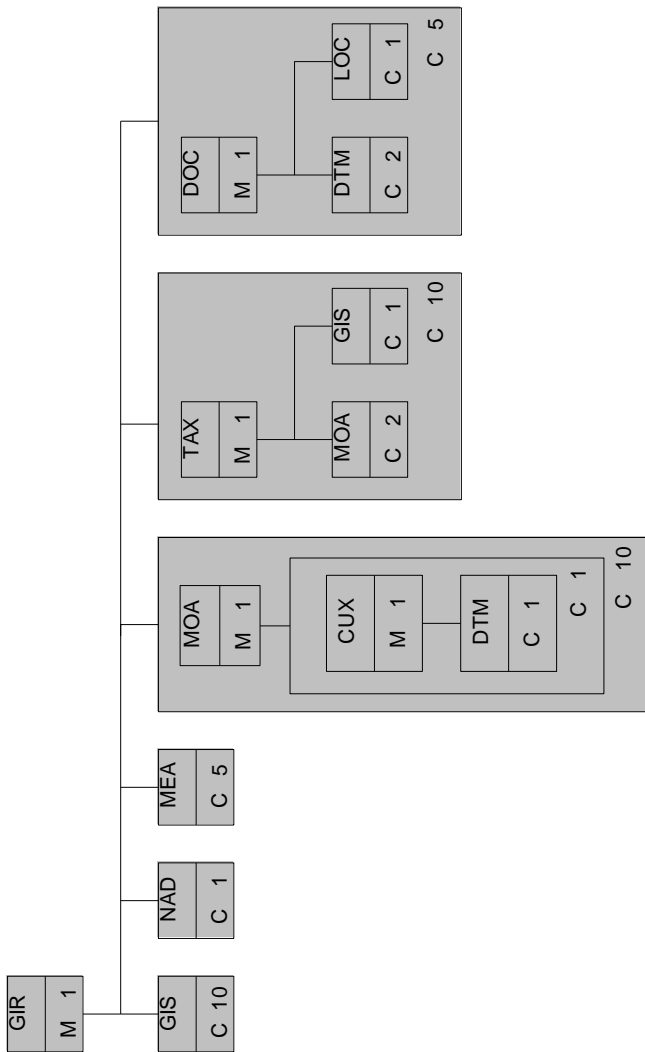
A2



B1



B2



Lýsing liða

Í þessum kafla eru sýndir allir liðir skeytisins. Þeir liðir sem ekki eru notaðir eru skyggðir og sama gildir um þau gagnastök sem ekki eru notuð. Þennan hluta er gott að lesa með yfirlitinu yfir uppbygginguna og þvottasnúruyfirlitinu, til þess að sjá samhengi hlutanna.

| UNH - M 1 - MESSAGE HEADER | | | |
|--|---|--------|---|
| <i>Function : To head, identify and specify a message.</i> | | | |
| 0062 MESSAGE REFERENCE NUMBER | M | an..14 | Einkvæmt raðnúmer skeytis innan sendingar, gefið af SMT-þýðanda eða viðsk.hugbúnaði. Númerið skal vera það sama og í DE 0062 í UNT skeytahlutanum. |
| S009 MESSAGE IDENTIFIER | M | | |
| 0065 Message type identifier | M | an..6 | *CUSDEC=Tollskýrsla |
| 0052 Message version number | M | an..3 | *D |
| 0054 Message release number | M | an..3 | *96A = Edifact directory D.96A |
| 0051 Controlling agency, coded | M | an..2 | *UN Útgefið af: UN=Sameinuðu þjóðirnar |
| 0057 Association assigned code | C | an..6 | |
| 0068 COMMON ACCESS REFERENCE | C | an..35 | |
| S010 STATUS OF THE TRANSFER | C | | |
| 0070 Sequence message transfer number | M | n..2 | |
| 0073 First/last sequence message transfer indic. | C | a1 | |

BGM - M 1 - BEGINNING OF MESSAGE*Function : To specify message name and function.*

| | | | |
|------------------------------------|---|--------|---|
| C002 DOCUMENT/MESSAGE NAME | C | | |
| 1001 Document/message name, coded | C | an..3 | *830 = Tollskýrsla |
| 1131 Code list qualifier | C | an..3 | |
| 3055 Code list resp. agency, coded | C | an..3 | |
| 1000 Document/message name | C | an..35 | |
| 1004 DOCUMENT/MESSAGE NUMBER | C | an..35 | Sendingarnúmer skv. farmskrá. Sbr. reitur nr. 21a á útflutningsskýrslu. Vartölu sendingarnúmers skal sleppa í skeytinu. |
| 1225 MESSAGE FUNCTION, CODED | C | an..3 | *9 = Upprunalegt *4 = Breyting - Fullnaðaruppgjör bráðabirgðatollafgreiðslu |
| 4343 RESPONSE TYPE, CODED | C | an..3 | |

Skýringar:

1225 - Með 9 = Upprunalegt, er átt við að um venjulega sendingu tollskýrslu er að ræða. Þessi kóði er alltaf notaður.

1225 – Með 4 = Breyting á áður innsendri tollskýrslu. Notað við fullnaðaruppgjör bráðabirgðatollafgreiðslu

CST - M 1 - CUSTOMS STATUS OF GOODS

Function : To identify the customs tariff of the goods, their required treatment and, where these are different to the header information, the type of declaration and the current status of the goods.

| 1496 GOODS ITEM NUMBER | C | n..5 | |
|--|---|--------|--|
| C246 CUSTOMS IDENTITY CODES | C | | |
| 7361 Customs code identification | M | an..18 | Markaðssvæði (reitur 1a), tegund afgreiðslu (reitur 1b), tegund transit (reitur 1c) og tegund viðskipta (reitur 24). Sjá leiðbeiningar tollyfirvalda. |
| 1131 Code list qualifier | C | an..3 | *104 = Markaðssvæði (reitur 1a) *105 = Tegund afgreiðslu (reitur 1b) *112 = Tegund viðskipta (reitur 24) *149 = Tegund transit (reitur 1c) (óvirkur kódi, ekki notaður) |
| 3055 Code list responsible agency, coded | C | an..3 | *159 = Tollyfirvöld á Íslandi |
| C246 CUSTOMS IDENTITY CODES | C | | |
| 7361 Customs code identification | M | an..18 | |
| 1131 Code list qualifier | C | an..3 | |
| 3055 Code list responsible agency, coded | C | an..3 | |
| C246 CUSTOMS IDENTITY CODES | C | | |
| 7361 Customs code identification | M | an..18 | |
| 1131 Code list qualifier | C | an..3 | |
| 3055 Code list responsible agency, coded | C | an..3 | |
| C246 CUSTOMS IDENTITY CODES | C | | |
| 7361 Customs code identification | M | an..18 | |
| 1131 Code list qualifier | C | an..3 | |
| 3055 Code list responsible agency, coded | C | an..3 | |

| | | | |
|--|---|--------|--|
| C246 CUSTOMS IDENTITY CODES | C | | |
| 7361 Customs code identification | M | an..18 | |
| 1131 Code list qualifier | C | an..3 | |
| 3055 Code list responsible agency, coded | C | an..3 | |

Skýringar:

LOC - C 99 - PLACE/LOCATION IDENTIFICATION

Function :To identify a place or location relevant to the entire message. For example, port of loading, office of entry, etc.

| | | | |
|--|---|--------|---|
| 3227 PLACE/LOCATION QUALIFIER | M | an..3 | *36 = Ákvörðunarland (reitur 17a) *40 = Viðskiptaland (reitur 11). Sjá leiðbeiningar tollyfirvalda *89 = Þjóðerni virks flutningsfars (reitur 21b). |
| C517 LOCATION IDENTIFICATION | C | | |
| 3225 Place/location identification | C | an..25 | Kóði lands skv. ISO staðli |
| 1131 Code list qualifier | C | an..3 | |
| 3055 Code list responsible agency, coded | C | an..3 | *5 = ISO staðall |
| 3224 Place/location | C | an..17 | |
| C519 RELATED LOCATION ONE ID. | C | | |
| 3223 Related place/location one identification | C | an..25 | |
| 1131 Code list qualifier | C | an..3 | |
| 3055 Code list responsible agency, coded | C | an..3 | |
| 3222 Related place/location one | C | an..70 | |
| C553 RELATED LOCATION TWO ID. | C | | |
| 3233 Related place/location two identification | C | an..25 | |
| 1131 Code list qualifier | C | an..3 | |
| 3055 Code list responsible agency, coded | C | an..3 | |
| 3232 Related place/location two | C | an..70 | |
| 5479 RELATION, CODED | C | an..3 | |

Skýringar:

DTM - C 15 - DATE/TIME PERIOD

Function : To identify dates, times or periods relevant to the whole message. For example, actual date of arrival, elected date of presentation, etc.

| | | | | |
|------|--------------------------------|---|--------|--|
| C507 | DATE/TIME/PERIOD | C | | |
| 2005 | Date/time/period qualifier | M | an..3 | *137 = Dagsetning skeytis |
| 2380 | Date/time/period | M | an..35 | Dagsetning |
| 2379 | Date/time/period fmt qualifier | M | an..3 | *102 = ÖÖÁÁMMDD *203 = ÖÖÁÁMMDDKKMM |

Skýringar:

Þessi liður skal einungis koma einu sinni fyrir.

GIS - C 25 - GENERAL INDICATOR

Function :To identify the various indicators required by a customs system. For example, special programs, release certification, duty free eligibility under GSP, etc.

| | | | |
|------------------------------------|---|--------|--|
| C529 PROCESSING INDICATOR | M | | |
| 7365 Processing indicator, coded | M | an..3 | Gámur (reitur 19), sjá leiðbeiningar tollyfirvalda |
| 1131 Code list qualifier | C | an..3 | *109 = Kóðalisti tollyfirvalda |
| 3055 Code list resp. agency, coded | C | an..3 | *159 = Tollyfirvöld á Íslandi |
| 7187 Process type identification | C | an..17 | |

Skýringar:

MEA - C 5 - MEASUREMENTS

Function : To identify various measurement factors where these are required for the whole declaration (message).

| | | | |
|---|---|-------|--|
| 6311 MEASUREMENT APPLICATION QUALIFIER | M | an..3 | *AAE = Mæling |
| C502 MEASUREMENT DETAILS | C | | |
| 6313 Measurement dimension, coded | C | an..3 | |
| 6321 Measurement significance, coded | C | an..3 | |
| 6155 Measurement attribute, coded | C | an..3 | |
| C174 VALUE/RANGE | C | | |
| 6411 Measure unit qualifier | M | an..3 | *PCE = Stykkjafjöldi |
| 6314 Measurement value | C | n..18 | Fjöldi stykkja í sendingunni. (Reitur 6) |
| 6162 Range minimum | C | n..18 | |
| 6152 Range maximum | C | n..18 | |
| 7383 SURFACE/LAYER INDICATOR, CODED | C | an..3 | |

Skýringar:

RFF-DTM-SG2 - C 99 - Reference loop

A group of segments identifying various references, manifest quantities and package identities relevant to the whole message.

RFF - M 1 - REFERENCE

Function : To identify the various references relevant to the whole message.

| | | | |
|-------------------------------|---|--------|--|
| C506 REFERENCE | M | | |
| 1153 Referece qualifier | M | an..3 | *CW = Nr. bögguls *ERN = Tilvísunarnúmer útflytjanda (Reitur 7) |
| 1154 Reference number | C | an..35 | |
| 1156 Line number | C | an..6 | |
| 4000 Reference version number | C | an..35 | |

Skýringar:

Skýring á 1154 í tengslum við kóða fyrir 1153:

1153 = CW = Nr. bögguls (Package number)

Viðtökunúmer bögguls, kemur ekki fram í leiðbeiningum tolyfirvalda. Notað fyrir póstsendingar.

1153 = ERN = Tilvísunarnúmer útflytjanda (Exporters reference number)

Tilvísunarnúmer, sbr. reitur nr. 7 á útflutningsskýrslu.

TDT-TPL - C 5 - Transport placement loop

A group of segments identifying the mode, means and identification of the transport used.

TDT - M 1 - DETAILS OF TRANSPORT

Function : To specify the transport details such as mode of transport, means of transport, its conveyance reference number and the identification of the means of transport. The segment may be pointed to by the TPL segment..

| | | | |
|--|---|--------|--|
| 8051 TRANSPORT STAGE QUALIFIER | M | an..3 | *11 = Við landamæri (At border) |
| 8028 CONVEYANCE REFERENCE NUMBER | C | an..17 | |
| C220 MODE OF TRANSPORT | C | | |
| 8067 Mode of transport, coded | C | an..3 | Flutningsmáti, notið UN/ECE Recommendation No 19. Sjá leiðbeiningar frá tollyfirvöldum (Reitur 25) |
| 8066 Mode of transport | C | an..17 | |
| C228 TRANSPORT MEANS | C | | |
| 8179 Type of means of transport identification | C | an..8 | |
| 8178 Type of means of transport | C | an..17 | |
| C040 CARRIER | C | | |
| 3127 Carrier identification | C | an..17 | |
| 1131 Code list qualifier | C | an..3 | |
| 3055 Code list responsible agency, coded | C | an..3 | |
| 3128 Carrier name | C | an..35 | |
| 8101 TRANSIT DIRECTION, CODED | C | an..3 | |

| | | | |
|--|---|--------|--|
| C401 EXCESS TRANSPORTATION INFORMATION | C | | |
| 8457 Excess transportation reason, coded | M | an..3 | |
| 8459 Excess transportation responsibility, coded | M | an..3 | |
| 7130 Customer authorization number | C | an..17 | |
| C222 TRANSPORT IDENTIFICATION | C | | |
| 8213 Id. of means of transport identification | C | an..9 | |
| 1131 Code list qualifier | C | an..3 | |
| 3055 Code list responsible agency, coded | C | an..3 | |
| 8212 Id. of the means of transport | C | an..35 | |
| 8453 Nationality of means of transport, coded | C | an..3 | |
| 8281 TRANSPORT OWNERSHIP, CODED | C | an..3 | |

Skýringar:

NAD-RFF-CTA-COM - C 10 - Name and address loop

A group of segments identifying the parties relevant to the whole message, with their related references, contacts, and communication numbers.

NAD - M 1 - NAME AND ADDRESS

Function : To identify the parties relevant to the entire message. For example importer, ultimate consignee, etc.

| | | | |
|------------------------------------|---|--------|--|
| 3035 PARTY QUALIFIER | M | an..3 | *CZ = Consigner (Shipper/sender) - Sendandi (reitur 2) -kt *AG = Agent/representative - Skýrslugjafi/umboðsaðili (reitur 14) -kt *UC = Ultimate consignee - Viðtakandi (reitur 8) - Nafn/heimili |
| C082 PARTY IDENTIFICATION DETAILS | C | | |
| 3039 Party id identification | M | an..17 | Íslensk kennitala (10 stafir) |
| 1131 Code list qualifier | C | an..3 | |
| 3055 Code list resp. agency, coded | C | an..3 | *ZZZ=Íslensk kennitala notuð |
| C058 NAME AND ADDRESS | C | | |
| 3124 Name and address line | M | an..35 | Nafn |
| 3124 Name and address line | C | an..35 | Heimili |
| 3124 Name and address line | C | an..35 | Heimili |
| 3124 Name and address line | C | an..35 | Heimili |
| 3124 Name and address line | C | an..35 | Heimili |
| C080 PARTY NAME | C | | |
| 3036 Party name | M | an..35 | |
| 3036 Party name | C | an..35 | |
| 3036 Party name | C | an..35 | |
| 3036 Party name | C | an..35 | |
| 3036 Party name | C | an..35 | |

| | | | |
|------------------------------------|---|--------|--|
| 3045 Party name format, coded | C | an..3 | |
| C059 STREET | C | | |
| 3042 Street and number/P.O. Box | M | an..35 | |
| 3042 Street and number/P.O. Box | C | an..35 | |
| 3042 Street and number/P.O. Box | C | an..35 | |
| 3042 Street and number/P.O. Box | C | an..35 | |
| 3164 CITY NAME | C | an..35 | |
| 3229 COUNTRY SUB-ENTITY IDENTIFIC. | C | an..9 | |
| 3251 POSTCODE IDENTIFICATION | C | an..9 | |
| 3207 COUNTRY, CODED | C | an..3 | |

Skýringar:

Ef 3035 er CZ eða AG, þá er eingöngu notuð íslensk kennitala.

Ef 3035 er UC, þá er kennitalan ekki notuð, en nafn og allt að fjórar línur með heimilisfangi útfyllt.

Nánari skýringar á kóða fyrir 3035 skv. UN/EDIFACT:

UC Ultimate consignee

Party who has been designated on the invoice or packing list as the final recipient of the stated merchandise.

ATH. AG er notað eingöngu ef skýrslugjafi er ekki sá sami og útflytjandi. Má þó vera sá sami ef um miðlara er að ræða.

TOD-LOC-FTX - C 1 - Terms of delivery loop

A group of segments identifying the terms of delivery pertinent to the entire message.

TOD - M 1 - TERMS OF DELIVERY

Function : To identify terms of delivery, relevant to the entire message, in a coded format.

| | | | |
|--|---|--------|---|
| 4055 TERMS OF DELIVERY FUNCTION, CODED | C | an..3 | Afhendingarskilmálar sbr. UN/ECE recommendation nr. 5. Kóðar skv. Incoterms 1990, t.d. 'CIF', 'FOB'. (reitur 20a) |
| 4215 TRANSPORT CHARGES METHOD OF PAYMENT, CODED | C | an..3 | |
| C100 TERMS OF DELIVERY | C | | |
| 4053 Terms of delivery, coded | C | an..3 | |
| 1131 Code list qualifier | C | an..3 | |
| 3055 Code list responsible agency, coded | C | an..3 | |
| 4052 Terms of delivery | C | an..70 | |
| 4052 Terms of delivery | C | an..70 | |

Skýringar:

LOC - C 2 - PLACE/LOCATION IDENTIFICATION

Function : To identify a location related to the terms of delivery identified in TOD.

| | | | |
|--|---|--------|--|
| 3227 PLACE/LOCATION QUALIFIER | M | an..3 | *1 = Staður afhendingarskilmála (Place of terms of delivery) |
| C517 LOCATION IDENTIFICATION | C | | |
| 3225 Place/location identification | C | an..25 | Nafn afhendingarstaðar, allt að 21 stafur. (reitur 20b). |
| 1131 Code list qualifier | C | an..3 | |
| 3055 Code list responsible agency, coded | C | an..3 | |
| 3224 Place/location | C | an..17 | |
| C519 RELATED LOCATION ONE ID. | C | | |
| 3223 Related place/location one identification | C | an..25 | |
| 1131 Code list qualifier | C | an..3 | |
| 3055 Code list responsible agency, coded | C | an..3 | |
| 3222 Related place/location one | C | an..70 | |
| C553 RELATED LOCATION TWO ID. | C | | |
| 3233 Related place/location two identification | C | an..25 | |
| 1131 Code list qualifier | C | an..3 | |
| 3055 Code list responsible agency, coded | C | an..3 | |
| 3232 Related place/location two | C | an..70 | |
| 5479 RELATION, CODED | C | an..3 | |

Skýringar:

Nota 5 stafa kóða (t.d. ISHAF)

MOA-SG9 - C 25 - Monetary amount loop

A group of segments identifying monetary amounts, currencies and their exchange rates, when required for the whole declaration.

MOA - M 1 - MONETARY AMOUNT

Function : To identify a monetary function and up to five monetary amounts.

| | | | |
|--|---|-------|---|
| C516 MONETARY AMOUNT | M | | |
| 5025 Monetary amount amount type qualifier | M | an..3 | *128 = Heildarupphæð (Reitur 22b) Kostnaður. Skv kóðalista tollyfirvalda (Reitur 28a) |
| 5004 Monetary amount | C | n..18 | Upphæðin í viðkomandi mynt. Hámark 14 stafir, komma meðtalin Reitur 22b ef 5025 = 128, annars reitur 28b |
| 6345 Currency, coded | C | an..3 | Mynt kóði, skv. ISO 4217 staðli. a3, dæmi: DKK (reitur 22a) Aðeins gefið upp með heildarupphæð |
| 6343 Currency qualifier | C | an..3 | |
| 4405 Status, coded | C | an..3 | |

Skýringar:

ATH. Fjöldi kostnaðarliða skv. reit 28a, sjá leiðbeiningar tollyfirvalda. Mynt kostnaðarliða er sú sama og mynt heildarupphæðar.

Detail Section

This section provides information relating to commercial documentation and customs requirements for the clearance of goods.

UNS - M 1 - SECTION CONTROL

Function : A service segment placed at the beginning of the detail section to indicate the beginning of that section.

| | | | |
|-------------------------|---|----|----|
| 0081 Section identifier | M | a1 | *D |
|-------------------------|---|----|----|

Skýringar:

Þessi liður aðskilur upplýsingar í haus útflutningsskýrslu og upplýsingar í línunum fyrir hvert tollskrárnúmer.

CST-FTX-LOC-DTM-MEA-NAD-TDT-SG31-SG33-SG35-SG37-SG38-SG39-SG40-SG41-SG42-SG44 - C 9999 - Item detail loop

A group of segments identifying detailed information for a single customs item of a customs declaration.

CST - M 1 - CUSTOMS STATUS OF GOODS

Function : To identify the customs tariff of the goods, their required treatment and, where these are different to the header information, the type of declaration and the current status of the goods.

| | | | |
|--|---|--------|---|
| 1496 GOODS ITEM NUMBER | C | n..5 | |
| C246 CUSTOMS IDENTITY CODES | C | | |
| 7361 Customs code identification | M | an..18 | Tollskrárnúmer skv. tollskrá, reitur nr. 33 á útflutningsskýrslu. |
| 1131 Code list qualifier | C | an..3 | |
| 3055 Code list responsible agency, coded | C | an..3 | *159 = Tollyfirvöld á Íslandi |
| C246 CUSTOMS IDENTITY CODES | C | | |
| 7361 Customs code identification | M | an..18 | |
| 1131 Code list qualifier | C | an..3 | |
| 3055 Code list responsible agency, coded | C | an..3 | |
| C246 CUSTOMS IDENTITY CODES | C | | |
| 7361 Customs code identification | M | an..18 | |
| 1131 Code list qualifier | C | an..3 | |
| 3055 Code list responsible agency, coded | C | an..3 | |
| C246 CUSTOMS IDENTITY CODES | C | | |

| | | | |
|-----------------------------|-------------------------------------|---|--------|
| 7361 | Customs code identification | M | an..18 |
| 1131 | Code list qualifier | C | an..3 |
| 3055 | Code list responsible agency, coded | C | an..3 |
| C246 CUSTOMS IDENTITY CODES | | | |
| 7361 | Customs code identification | M | an..18 |
| 1131 | Code list qualifier | C | an..3 |
| 3055 | Code list responsible agency, coded | C | an..3 |

Skýringar:

FTX - C 9 - FREE TEXT

Function : To identify the customs description in narrative form.

| | | | |
|-----------------------------------|---|--------|---|
| 4451 TEXT SUBJECT QUALIFIER | M | an..3 | *AAA = Vörulýsing (Goods description) *PAC = Tala og tegund (Packing/marketing information) |
| 4453 TEXT FUNCTION, CODED | C | an..3 | |
| C107 TEXT REFERENCE | C | | |
| 4441 Free text, coded | M | an..3 | |
| 1131 Code list qualifier | C | an..3 | |
| 3055 Cde list resp. agency, coded | C | an..3 | |
| C108 TEXT LITERAL | C | | |
| 4440 Free text | M | an..70 | Vörulýsing, hámark 40 stafir (reitur 31) EDA Tala og tegund, hámark 30 stafir (reitur 31) |
| 4440 Free text | C | an..70 | |
| 4440 Free text | C | an..70 | |
| 4440 Free text | C | an..70 | |
| 4440 Free text | C | an..70 | |
| 3453 LANGUAGE, CODED | C | an..3 | |

Skýringar:

LOC - C 25 - PLACE/LOCATION IDENTIFICATION

Function : To identify the places relevant to a customs item. For example, country of origin, country of export, etc.

| | | | |
|--|---|--------|--|
| 3227 PLACE/LOCATION QUALIFIER | M | an..3 | *27 = Upprunaland. Landakóði skv. ISO staðli, Sjá fylgiskjal tolyfirvalda. |
| C517 LOCATION IDENTIFICATION | C | | |
| 3225 Place/location identification | C | an..25 | Upprunaland (reitur nr. 34a á útflutningsskýrslu.) |
| 1131 Code list qualifier | C | an..3 | *5 = ISO |
| 3055 Code list responsible agency, coded | C | an..3 | |
| 3224 Place/location | C | an..17 | |
| C519 RELATED LOCATION ONE ID. | C | | |
| 3223 Related place/location one identification | C | an..25 | |
| 1131 Code list qualifier | C | an..3 | |
| 3055 Code list responsible agency, coded | C | an..3 | |
| 3222 Related place/location one | C | an..70 | |
| C553 RELATED LOCATION TWO ID. | C | | |
| 3233 Related place/location two identification | C | an..25 | |
| 1131 Code list qualifier | C | an..3 | |
| 3055 Code list responsible agency, coded | C | an..3 | |
| 3232 Related place/location two | C | an..70 | |
| 5479 RELATION, CODED | C | an..3 | |

Skýringar:

MEA - C 20 - MEASUREMENTS

Function : To identify the necessary statistical information requirements related to a tariff number. For example, net weights, volumes, etc.

| | | | |
|--------------------------------------|---|-------|--|
| 6311 MEASUREMENT APPLIC. QUALIFIER | M | an..3 | *AAE = Mæling *CT = Talning |
| C502 MEASUREMENT DETAILS | C | | |
| 6313 Measurement dimension, coded | C | an..3 | *AAF = Nettóþyngd án umbúða (reitur 38) *AAB = Brúttóþyngd með umbúðum, án flutningstækja (reitur 35) *ZZZ = Magn í annarri einingu í skv. kóðalista tollyfirvalda (reitur 41) |
| 6321 Measurement significance, coded | C | an..3 | |
| 6155 Measurement attribute, coded | C | an..3 | |
| C174 VALUE/RANGE | C | | |
| 6411 Measure unit qualifier | M | an..3 | KGM = Kílógrömm Kóðar skv. kóðalista tollyfirvalda |
| 6314 Measurement value | C | n..18 | |
| 6162 Range minimum | C | n..18 | |
| 6152 Range maximum | C | n..18 | |
| 7383 SURFACE/LAYER INDICATOR, CODED | C | an..3 | |

Skýringar:

Gildi sem eiga við vöru í hverri línu, þ.e. í hverju tollskrárnúmeri er tilgreint í C174 6314.

6313 = AAF:

Liðurinn sýnir nettóþyngd vöru. (reitur 38) 6311 skal vera = AAE og 6411 skal vera = KGM

6313 = AAB:

Liðurinn sýnir brúttóþyngd vöru. (reitur 35) 6311 skal vera = AAE og 6411 skal vera = KGM

6313 = ZZZ:

Liðurinn sýnir magn í annarri einingu. (reitur 41) Einingin er tilgreind í 6411. 6311 getur verið = AAE eða CT og 6411 er kóði skv. kóðalista tollyfirvalda

6314

Hér skal alltaf vera heiltala, nema ef verið er að gefa upp styrk áfengis.

PAC-SG32 - C 10 - Package loop

A segment group to identify package information.

PAC - M 1 - PACKAGE

Function : To identify the number and type of manifested units that are being referenced.

| | | | |
|--|---|--------|--|
| 7224 NUMBER OF PACKAGES | C | n..8 | |
| C531 PACKAGING DETAILS | C | | |
| 7075 Packaging level, coded | C | an..3 | |
| 7233 Packaging related information, coded | C | an..3 | |
| 7073 Packaging terms and conditions, coded | C | an..3 | |
| C202 PACKAGE TYPE | C | | |
| 7065 Type of packages identification | C | an..7 | |
| 1131 Code list qualifier | C | an..3 | |
| 3055 Code list responsible agency, coded | C | an..3 | |
| 7064 Type of packages | C | an..35 | |
| C402 PACKAGE TYPE IDENTIFICATION | C | | |
| 7077 Item description type, coded | M | an..3 | |
| 7064 Type of packages | M | an..35 | |
| 7143 Item number type, coded | C | an..3 | |
| 7064 Type of packages | C | an..35 | |
| 7143 Item number type, coded | C | an..3 | |
| C532 RETURNABLE PACKAGE DETAILS | C | | |

| | | | |
|---|---|-------|--|
| 8395 Returnable package freight payment responsibility, coded | C | an..3 | |
| 8393 Returnable package load contents, coded | C | an..3 | |

Skýringar:

Dummy liður fyrir PCI-liðinn á eftir.

PCI-FTX - C 999 - Package identification loop

A group of segments identifying marks and labels, and giving the description of single packages associated with a customs item.

PCI - M 1 - PACKAGE IDENTIFICATION

Function : To specify markings and labels on individual packages or physical units.

| | | | |
|--|---|--------|---|
| 4233 MARKING INSTRUCTIONS, CODED | C | an..3 | *28 = Merki, frjáls texti *30 = Serial shipping container code |
| C210 MARKS & LABELS | C | | |
| 7102 Shipping marks | M | an..35 | Merki, ef 4233 = 28 (reitur 31). Gámanúmer ef 4233 = 30 (reitur 31) |
| 7102 Shipping marks | C | an..35 | Gámanúmer |
| 7102 Shipping marks | C | an..35 | Gámanúmer |
| 7102 Shipping marks | C | an..35 | Gámanúmer |
| 7102 Shipping marks | C | an..35 | Gámanúmer |
| 7102 Shipping marks | C | an..35 | Gámanúmer |
| 7102 Shipping marks | C | an..35 | Gámanúmer |
| 7102 Shipping marks | C | an..35 | Gámanúmer |
| 7102 Shipping marks | C | an..35 | Gámanúmer |
| 7102 Shipping marks | C | an..35 | Gámanúmer |
| 8275 CONTAINER/PACKAGE STATUS, CODED | C | an..3 | |
| C827 TYPE OF MARKING | C | | |
| 7511 Type of marking, coded | M | an..3 | |
| 1131 Code list qualifier | C | an..3 | |
| 3055 Code list responsible agency, coded | C | an..3 | |

| | | | |
|--|--|--|--|
| | | | |
|--|--|--|--|

Skýringar:

Hægt er að senda 1 línu með merki og liðurinn getur því einungis komið einu sinni fyrir vegna þess. Liðurinn getur síðan komið allt að 3 sinnum fyrir vegna gámanúmera (allt að 10 númer hverju sinni, að hámarki alls 30 gámanúmer). Gámanúmer má vera allt að 20 stafir.

MOA-SG34 - C 25 - Monetary loop

A group of segments identifying various monetary amounts, currencies and rates of exchange that pertain to the customs item.

MOA - M 1 - MONETARY AMOUNT

Function : To identify the monetary amounts necessary for statistical and duty purposes.

| | | | |
|--|---|-------|---|
| C516 MONETARY AMOUNT | M | | |
| 5025 Monetary amount amount type qualifier | M | an..3 | *40 = Tollverð (Customs value) |
| 5004 Monetary amount | C | n..18 | Fob verð línunnar. Reitur nr. 46 á útflutningsskýrslu. Upphæðin er í mynt sem gefin er upp í reit nr. 22. Hámark 14 stafir, komma meðtalin. |
| 6345 Currency, coded | C | an..3 | |
| 6343 Currency qualifier | C | an..3 | |
| 4405 Status, coded | C | an..3 | |

Skýringar:

RFF-DTM-GIN-MOA-SG36 - C 999 - Reference loop

A group of segments identifying references, descriptions, and monetary amounts associated with a customs item.

RFF - M 1 - REFERENCE

Function : To identify particular references relating to the customs item. For example, the invoice number of any invoice that contains merchandise on this customs item.

| | | | |
|-------------------------------|---|--------|---|
| C506 REFERENCE | M | | |
| 1153 Referece qualifier | M | an..3 | *IV = Reikningsnúmer |
| 1154 Reference number | C | an..35 | Reikningsnúmer, reitur nr. 44 á útflutningsskýrslu. |
| 1156 Line number | C | an..6 | |
| 4000 Reference version number | C | an..35 | |

Skýringar:

Gefa má upp allt að 30 reikningsnúmer, þ.a. liðurinn má koma 30 sinnum fyrir.

DOC-DTM-LOC - C 25 - Document loop

A group of segments identifying report documentary requirements of particular government agencies, with the optional name and address of the agency involved .

DOC - M 1 - DOCUMENT/MESSAGE DETAILS

Function : To indicate a specific document required as supporting information for a customs item.

| | | | |
|--------------------------------------|---|--------|---|
| C002 DOCUMENT/MESSAGE NAME | M | | |
| 1001 Document/message name, coded | C | an..3 | Kóði skjals. Leyfi/vottorð (fylgiskjöl) útflutningsskýrslu, eða skráningarnúmer bifreiðar. Sjá skilgreiningu tollyfirvalda (reitur nr. 44). |
| 1131 Code list qualifier | C | an..3 | |
| 3055 Code list resp. agency, coded | C | an..3 | *159 = Tollyfirvöld á Íslandi |
| 1000 Document/message name | C | an..35 | |
| C503 DOCUMENT/MESSAGE DETAILS | | | |
| 1004 Document/message number | C | an..35 | Númer skjals/leyfis/vottorðs/fylgiskjals, (reitur 44) EDA Fastanúmer frá Bifreiðaskoðun Íslands, eða erlent skráningarnúmer |
| 1373 Document/message status, coded | C | an..3 | |
| 1366 Document/message source | C | an..35 | |
| 3453 Language, coded | C | an..3 | |
| 3153 COMMUNIC. CHANNEL ID, CODED | C | an..3 | |
| 1220 NUMBER OF COPIES OF DOC. REQD. | C | n..2 | |
| 1218 NUMBER OF ORIGINALS OF DOC REQD | C | n..2 | |

GIS-PCD-DTM-RFF - C 25 - General indicator loop

A group of segments identifying special indicators or value data related to the customs item.

GIS - M 1 - GENERAL INDICATOR

Function : A segment identifying any necessary processing indicators where these are required by customs at the item level.

| | | | |
|------------------------------------|---|--------|---|
| C529 PROCESSING INDICATOR | M | | |
| 7365 Processing indicator, coded | M | an..3 | Tollmeðferð (reitur 37), kóði skv. skilgreiningu tolyfirvalda |
| 1131 Code list qualifier | C | an..3 | *109 = Kóðalisti tolyfirvalda |
| 3055 Code list resp. agency, coded | C | an..3 | *159 = Tollyfirvöld á Íslandi |
| 7187 Process type identification | C | an..17 | |

Skýringar:

Summary Section

UNS - M 1 - SECTION CONTROL

Function : A service segment placed at the beginning of the summary section to indicate the start of that section.

0081 Section identifier

M

a1

*S = Aðskilur línur fyrir hvert tollskrárnúmer frá lokaliðum skeytisins.

CNT - C 5 - CONTROL TOTAL

Function : To specify control totals. For example, the number of commercial documents, the total number of customs item, values, and packages reported in the message.

| | | | |
|-----------------------------|---|--------|--|
| C270 CONTROL | M | | |
| 6069 Control qualifier | M | an..3 | *5 = Fjöldi lína á aðflutningsskýrslu (reitur 5) |
| 6066 Control value | M | an..18 | Fjöldi lína |
| 6411 Measure unit qualifier | C | an..3 | *NMB = Fjöldi |

Skýringar:

UNT - M 1 - MESSAGE TRAILER

Function : A service segment ending a message, giving the total number of segments in the message and the message reference number of the message.

| | | | |
|--------------------------------------|---|--------|--------------------------------|
| 0074 NUMBER OF SEGMENTS IN A MESSAGE | M | n..6 | Heildarfjöldi liða í skeytinu. |
| 0062 INTERCHANGE CONTROL REFERENCE | M | an..14 | Sama og 0062 í UNH. |

Dæmi

| | |
|---|--|
| 1. UNA:+.?) | |
| 2. UNB+UNOA:1+5902697199+6501881019+031219:0941+123++CUSDEC++++1' | |
| 3. UNH+105563+CUSDEC:D:96A:UN' | |
| 4. BGM+830+M80015123ISREY0002+9' | Sendingarnúmer |
| 5. CST++EU:104+US:105++10:112' | Markaðssvæði: EU, Teg. afgr.:SMT |
| 6. LOC+36+DK::5' | Ákvörðunarland: DK |
| 7. LOC+40+IS::5' | Viðskiptaland: IS |
| 8. LOC+89+IS::5' | Þjóðerni virks flutningsfars (reitur 21b) |
| 9. DTM+137:20031209:102' | Dagsetning skeytis |
| 10. GIS+1:109:159' | Varan er flutt í gámi |
| 11. MEA+AAE++PCE:100' | Fjöldi stykkja í sendingunni |
| 12. RFF+ERN:123456-2003' | Tilvísunarnúmer útflytjanda |
| 13. TDT+11++10' | Flutningsmáti yfir landamæri: Á sjó |
| 14. NAD+CZ+5902697199::ZZZ' | Sendandi |
| 15. NAD+AG+0509672209::ZZZ' | Umboðsaðili |
| 16. NAD+UC++AAAA:BBBBB:CCCCC:DDDDD' | Viðtakandi |
| 17. TOD+CIF' | Afhendingarskilmálar |
| 18. LOC+1+REYKJAVIK' | Staður afhendingarskilmála |
| 19. MOA+128:1200.00:DKK' | Heildarupphæð |
| 20. MOA+FG:-150.00:DKK' | Flutningsgjald |
| 21. MOA+VT:-120.00:DKK' | Vátrygging |
| 22. MOA+AK:-90.00:DKK' | Annar kostnaður |
| 23. UNS+D' | |
| 24. CST+1+01011000:159' | Tollskrárnúmer fyrstu línu á skýrslu |
| 25. FTX+AAA+++Vorulysing' | Vörulýsing |
| 26. FTX+PAC+++Tala og tegund' | Tala og tegund |
| 27. LOC+27+DK:5' | Upprunaland: DK |
| 28. MEA+AAE+AAF+KGM:40' | Nettóþyngd án umbúða |
| 29. MEA+AAE+AAB+KGM:50' | Brúttóþyngd með umbúðum |
| 30. MEA+CT+ZZZ+STK:90' | Magn í annari ein. (Fjöldi stykkja) |
| 31. PAC+' | |
| 32. PCI+28+MERKI' | Merki |
| 33. PCI+30+111:222:333:444:555:6666:7777' | SSCC - Gámanúmer |
| 34. PCI+30+88888:99999' | SSCC - Gámanúmer |
| 35. MOA+40:140' | Tollverð |
| 36. RFF+IV:11111' | Reikningsnúmer |
| 37. RFF+IV:22222' | Reikningsnúmer |
| 38. RFF+IV:33333' | Reikningsnúmer |
| 39. GIS+10:109:159' | Tollmeðferð: Sala á íslenskri vöru til útlanda |
| 40. CST+2+02013003:159' | Tollskrárnúmer annarar línu á skýrslu o.s.frv. |
| 41. FTX+AAA+++Vorulysing 2' | |
| 42. FTX+PAC+++Tala og tegund 2' | |
| 43. LOC+27+DK:5' | |
| 44. MEA+AAE+AAF+KGM:60' | |

45. MEA+AAE+AAB+KGM:60'
46. MEA+CT+ZZZ+STK:10'
47. PAC+'
48. PCI+28+MERKI 2'
49. PCI+30+1111:2222:33333:44444:55555:666666:777777'
50. PCI+30+88888:99999'
51. MOA+40:700'
52. RFF+IV:11111'
53. RFF+IV:22222'
54. GIS+10:109:159'
55. UNS+S'
56. CNT+5:1:NMB'
57. UNT+55+105563'
58. UNZ+1+123'